




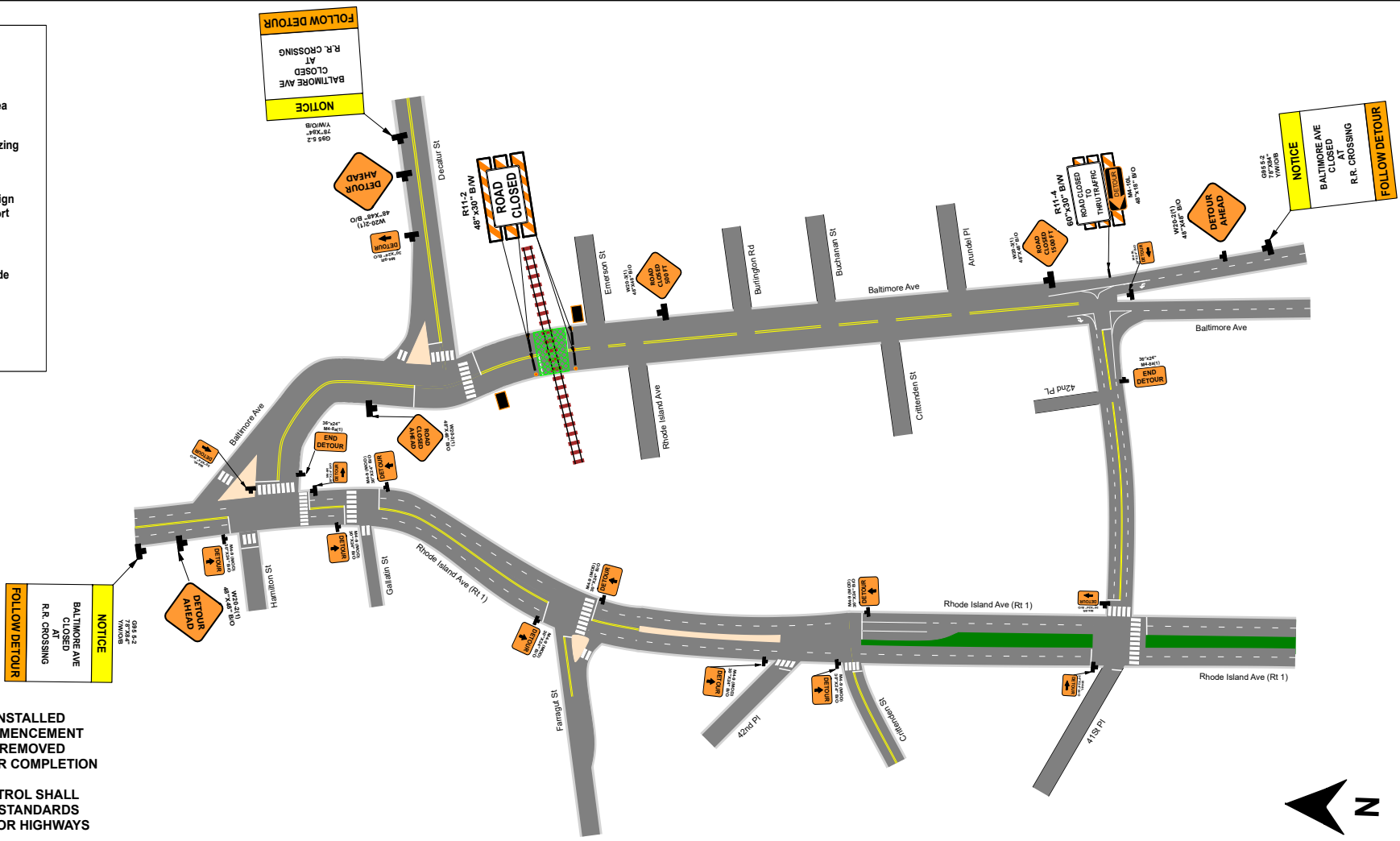


Legend

-  Work Area
-  Channelizing Devices
-  Temp. Sign & Support
-  Type III Barricade
-  PVMS



STANDARD NOTES:

1. SIGNS SHALL BE INSTALLED PRIOR TO THE COMMENCEMENT OF ALL WORK AND REMOVED IMMEDIATELY AFTER COMPLETION OF ACTIVITIES.
2. ALL TRAFFIC CONTROL SHALL ADHERE TO MDOT STANDARDS SPECIFICATIONS FOR HIGHWAYS AND STRUCTURES.
3. ALL FIELD PERSONNEL SHALL WEAR SAFETY VEST, HARD HATS, AND OTHER REQUIRED PERSONAL PROTECTION EQUIPMENT.
4. PVMS MESSAGE TO COME FROM DISTRICT ENGINEER.



Not to Scale

Signature Block

MAINTENANCE OF TRAFFIC PLAN APPROVED

BY: _____ DATE: _____



SUNRISE
 Safety Services
 THE TRAFFIC COMPANY
 Baltimore, Maryland
 410-590-3905

Contractor: Safety Service & Supply	
Location: 4801 Baltimore Ave, Hyattsville, MD 20781	
Notes: Road Closure to work on Railroad Tracks	
Designed By: V. Kauders	Date: 10/29/21
Pg. 1 of 1	